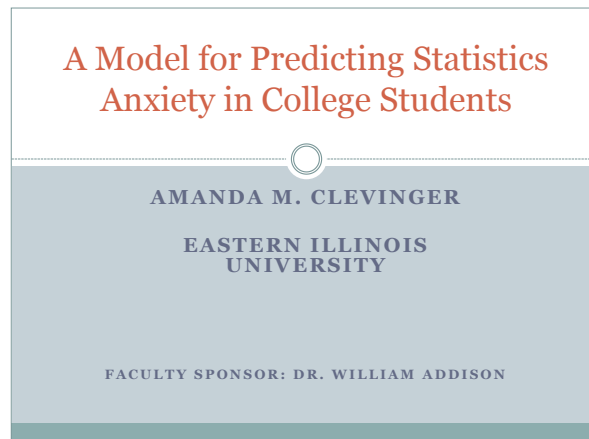


GUIDELINES FOR MAUPRC PRESENTATIONS

- Use a visually appealing format for your PowerPoint slides, although not so “appealing” that the visual elements detract from the content. Make sure the font is large enough so that it can be seen easily by people in the back of a standard-size classroom.
- Organize your presentation according to the guidelines for an APA-style research report. Generally, this means including the following sections:
 - Introduction/Rationale/Background (including hypotheses/predictions)
 - Method (including participants, materials, and procedure)
 - Results, reported using APA style
 - Discussion/Implications (including possible limitations of your study)
 - References for the citations included in your presentation. Generally, this should be no more than a handful of references.
- Include a title slide at the beginning of your presentation. This slide should include the title of your presentation, your name(s), your institutional affiliation (e.g., Eastern Illinois University), and the name of your faculty sponsor. Here’s an example:



- Include a thank-you slide at the end of the presentation (e.g., “Thanks for your attention!”)
- Make sure your presentation is no longer than 10 minutes. It can be shorter, but the shorter it is, the more time there will be for questions. You should time yourself giving your presentation so that you make sure you don’t exceed the 10-minute time limit. If you go over 10 minutes at the conference, the moderator will cut you off.
- Avoid memorizing a “speech.” Although it’s perfectly okay to have note cards or an outline to refer to, your presentation will be clearer if you just “talk” to your audience rather than “read” to them. And you know from your own experience as a student that reading directly from the PowerPoint slides is not a good idea.

- Don't talk too fast. You'll probably be feeling a little nervous, so you may have to consciously remind yourself to slow down.
- Try to relax; take a deep breath before you begin your presentation.
- Don't let the audience freak you out. Keep in mind that the audience for your presentation is comprised mainly of students like you and their faculty sponsors, which means they are very supportive of your efforts.